

## TECHNICAL SPECIFICATIONS

Review date: 18/02/20



SERIE: **INTIMIXER**

PRODUCT: **Fresh progressive Intimixer**

CHARACTERISTICS: **with Fresh set**

FINISH: **chrome**

CODE: **08 225 100**

EAN 13: **8435200077736**

WEIGHT: **0.85 kg** WIDTH: **20 cm** LONG: **33.5 cm** HIGH: **9 cm**

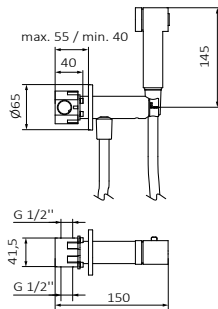


### TECHNICAL SPECIFICATIONS:

- › Recommended pressure: **1 to 5 bar**
- › Maximum pressure of use: **10 bar**
- › Connection dimensions according to **UNE-EN ISO 228-1**
- › Flow **3 bar min Progressivo l/mín**
- › Sensitivity and acoustics according to the norm **EN ISO 3822**

### MATERIAL SPECIFICATIONS:

- › Machined bodies **in brass**
- › Handle **Metálica**
- › Nickel-chrome coating resistant to salt spray test according to **UNE-EN 248**



### USE SPECIFICATIONS:

- › International patent for intelligent support avoiding floods
- › Built-in system
- › Flow limited 4 l/min
- › Progressive temperature control
- › Hot and cold water
- › Constant comfort flow
- › Replaceable 100% without work
- › Shut off in the vertical position
- › Fresh hand-shower and Silver hose 125 cm
- › Optional towel rail